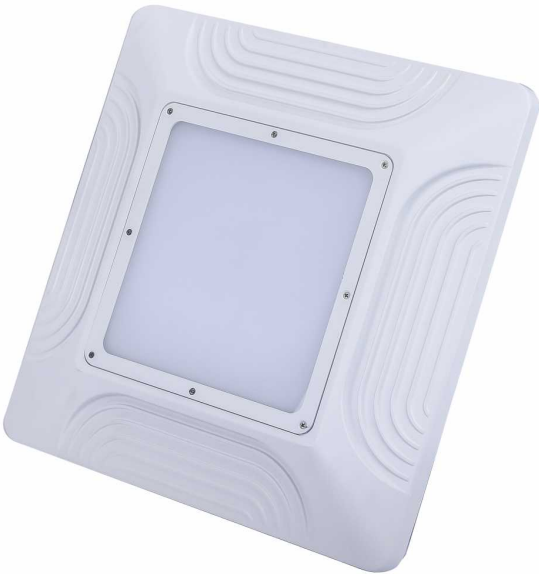


LAWSON 100W

Surface Mount Canopy Light

The LAWSON 100W Canopy Light is an ideal replacement for obsolete metal halide canopy lights, saving power and reducing maintenance costs. These attractive and functional LED canopy lights will be perfect for your needs providing rugged fitting with exceptional brightness. The LAWSON surface mount LED canopy light is suitable for outdoor applications such as loading docks, petrol stations, food processing plants and common areas. Featuring an IP65 and IK10 rating, they are durable and built to last. Suited for Surface Mounting



SPECIFICATIONS

Material Specifications

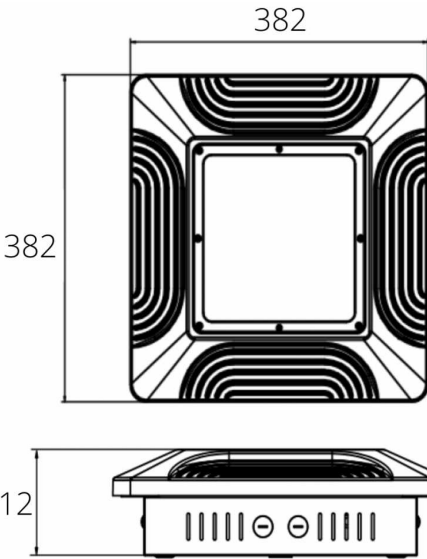
Housing	6063 Die Cast Aluminium
Finish	Anti-Corrosive Powder Coat
Dimensions	382mm x 382mm x 109mm(D)
Impact Rating	IK10
Ingress Protection	IP65
Weight	4.6kg
Warranty	5 Year Replacement

Electrical Specifications

Power Supply	LED Driver, CLO Output
Connection Method	Direct wired into Power Supply
Input Voltage	240V

Optic Specifications

Light Source	100W Lumileds LED
Delivered Lumens	15,208lm
CRI	80Ra
Beam Angle	120°
Colour Deviation	SDCM ≤ 4
Reported L70 (Hours)	> 54,000 Hrs



VARIATIONS

ND2850	LAWSON MK-II 100W Canopy Light, White, Non-Dim, 4000K
ND2850D	LAWSON MK-II 100W Canopy Light, White, DALI, 4000K